

Sinteso™/ Cerberus™ PRO/ Cerberus™ FIT/ Desigo CC/ Cerberus DMS

FireCatcher Camera

FDV202



Video fire detector suitable for Siemens fire control panels

- Combined smoke and flame detection
- Early detection at the source
- Immediate visual verification for optimal incident response
- Fire control panel connection via I/O module
- Milestone and Siemens surveillance integration
- Advanced fine-tuning
- Configurable detection zones
- Burnt-in metadata overlay
- Tampering and image quality control
- Activity monitoring

Features

- Integrated module to communicate events via I/O to the fire panel
- Hybrid physical feature extraction and machine learning algorithms
- Continuous health and image quality monitoring
- Electronic image stabilization

Eco-friendly

- Green design: recycled material use, reduction of hazardous substances
- RoHS and REACH compliant
- BFR/CFR and PVC free
- No conflict minerals
- Eco-friendly transport

Use

- Critical infrastructure
- Harsh environments
- Public areas
- Areas influenced by air flow

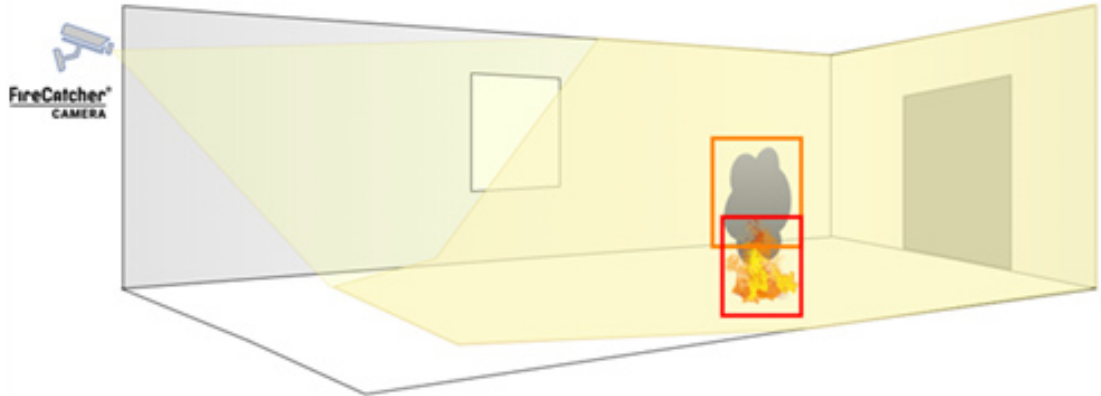
Typical applications

- Airport
- Battery charging
- E-vehicle parking area
- High ceiling
- Historical buildings
- Industry
- Nuclear power plant
- Protection of outdoor equipment
- Sawmill
- Substations
- Tunnel
- Waste recycling

Functions

The FDV202 FireCatcher Camera is a smart HDTV camera with built-in video fire detection functionality. It will trigger an alarm if it recognizes smoke or flames in the whole field of view. The FDV202 can be connected to the fire alarm control panel to generate audible and/or visual alarms if smoke or flames are detected. At the same time, the FDV202 can be connected via the LAN to the Video Management System for visual monitoring and verification.

Built-in tamper detection, image quality control and activity monitoring contribute to a failsafe and reliable detection.



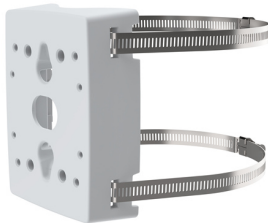
Accessories

AXIS TQ1601-E Conduit Back Box



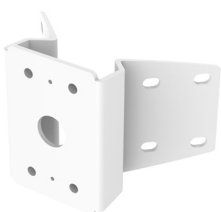
Aluminum conduit back box for increased mounting possibilities

AXIS T91B47 Pole Mount



For attaching the wall mount of the FDV202 housing to a pole or beam. Available for different pole diameters.

AXIS T94R01B Corner Bracket



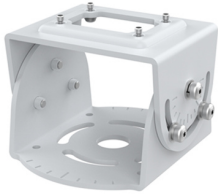
For attaching the wall mount of the FDV202 housing to the outer corners of a building.

AXIS T94Q01F Ceiling-and-column Mount



For attaching the FDV202 housing under hard surfaces such as ceilings, beams, soffits and canopies.

AXIS TQ1501-E Crane and Traffic Mount



Great mount for reducing vibrations and offering more stability to your FDV202 installation in demanding situations, such as mounting on cranes or traffic poles.

AXIS P13 Weathershield Kit A



Protection from rain, snow or sun with anti-glare coating to avoid reflection from near IR LEDs for the FDV202.

AXIS Sunshield A



Sunshield and weather protection for the FDV202.

Type overview

The section includes all device types described in this document.

The type summary may also include technical data required to select the product.

Type	Order number	Designation	Weight
FDV202	S54335-Z10-A1	FireCatcher Camera	2.725 kg (6 lb)

Accessories

Can be ordered from Axis directly.

Type	Axis Order number	Designation	Weight
AXIS TQ1601-E	02336-001	Conduit Back Box	0.54 kg (1.19 lb)
AXIS T91B47	01165-001	Pole Mount 50...150 mm (2...6 in)	0.30 kg (0.66 lb)
AXIS T91B47	01164-001	Pole Mount 100...410 mm (4...16 in)	without steel straps
AXIS T94R01B	5507-601	Corner Bracket	0.35 kg (0.77 lb)
AXIS T94Q01F	5507-591	Ceiling-and-Column Mount	1.30 kg (2.87 lb)
AXIS TQ1501-E	02384-001	Crane and Traffic Mount	0.53 kg (1.17 lb)
AXIS -	01693-001	AXIS P13 Weathershield Kit A	0.33 kg (0.72 lb)
AXIS -	5504-941	AXIS Sunshield A	0.39 kg (0.86 lb)

To be ordered from Siemens.

Type	Order number	Designation	Weight
FDCI222	A5Q00001984	Input module incl. 8 resistors, 2 mounting feet	0.098 kg

Product documentation

[siemens.com/bt/download](https://www.siemens.com/bt/download)

Notes

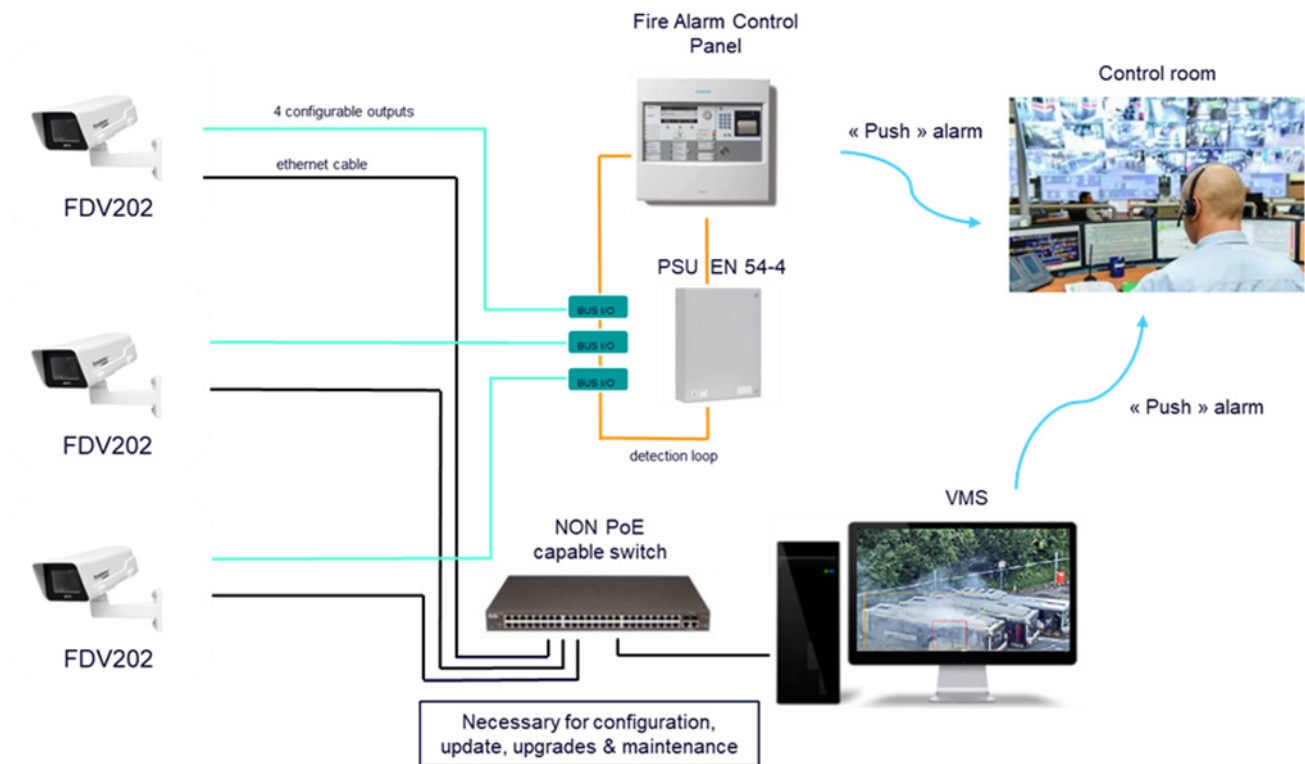
Box Content

- FireCatcher Camera with wall-mount bracket
- RJ45 connector cap
- 2-pins power mating connector
- 8-pins I/O mating connector
- Screwdriver Torx
- Spare cable seal

Mounting

- Wall mount included
- Optional accessories available for pole-mount or ceiling-mount

Installation



Commissioning

Commissioning tests can be performed on different levels, depending on the type of system integration and subject to what is possible, allowed and required on the site:

- Continuous internal simulation of alarms and fault status to verify connectivity with fire alarm control panel and/or video management system.
- Real smoke detection tests with smoke pellets or smoke generator.
- Flame detection simulation test by means of recorded video on a display device.
- Real flame detection tests with controlled recipients and fuel.

After installation, an as-built document is prepared for each FDV202 FireCatcher Camera with all relevant configuration information. This document serves for future reference and comparison during recurring maintenance.

Maintenance

Maintenance is typically performed once per year or after an incident as part of maintenance contract. Harsh and heavy polluted environments may require a more frequent cleaning regime, including activities 1, 4 and 8.

A regular maintenance is advised consisting of following activities:

1. Cleaning the FDV202 front window.
2. Retrieval and inspection of the camera server report.
3. Retrieval and inspection of the fire detection analytics logging.
4. Verification and adjustment of the field of view.
5. Updating camera firmware with approved and tested version.
6. Upgrading to the latest version of fire detection analytics software.
7. Functional test after upgrading.
8. Updating documentation to include any changes.
9. Warranty

The FDV202 FireCatcher Camera comes with a 2-year service contract, including:

- Camera warranty
- Software maintenance releases
- Software updates

Disposal



This symbol or any other national label indicate that the product, its packaging, and, where applicable, any batteries may not be disposed of as domestic waste. Delete all personal data and dispose of the item(s) at separate collection and recycling facilities in accordance with local and national legislation.
For additional details, refer to [Siemens information on disposal](#).

Technical data

FireCatcher Camera			
Operating voltage	DC 12 V	DC 24 V	DC 29 V
Operating current	0.52 A @ 20 °C 1.47 A @ -40 °C	0.26 A @ 20 °C 0.73 A @ -40 °C	0.21 A @ 20 °C 0.61 A @ -40 °C
Power	Typical: 6.2 W (@ 20 °C) Max: 17.6 W (heater on)		
Max current consumption	Inrush current: 5.1 A @ 29 V		
Energy consumption per year (24/7)	54.31 kWh @ 12 V, 20 °C		
Image	1 / 2.8 " RGB CMOS 1920 x 1080 resolution (HDTV)		
Lens	2.8...8 mm horizontal field of view 107°...42°		
Processing	Machine learning processing unit 1 GB RAM, 512 MB Flash		
Ethernet	10/100/1000 Base-T, auto-sensing, half/full duplex		
Dimensions	400 × 155 × 251 mm (15.76 × 6.08 × 9.88 in)		
Weight	2.725 kg (6 lb)		
Material	Impact-resistant polymer enclosure		
Color housing	White NCS S 1002-B		

Output functions and type			
Output	Configurable function	Default function	Type
1	Fire alarm, smoke alarm, flame alarm	Fire alarm	Normally open
2	Fire alarm, smoke alarm, flame alarm, supervisory, not in use	Not in use	Normally open
3	–	Fault	Normally closed
4	Fire alarm, smoke alarm, flame alarm, supervisory, not in use	Not in use	Normally open

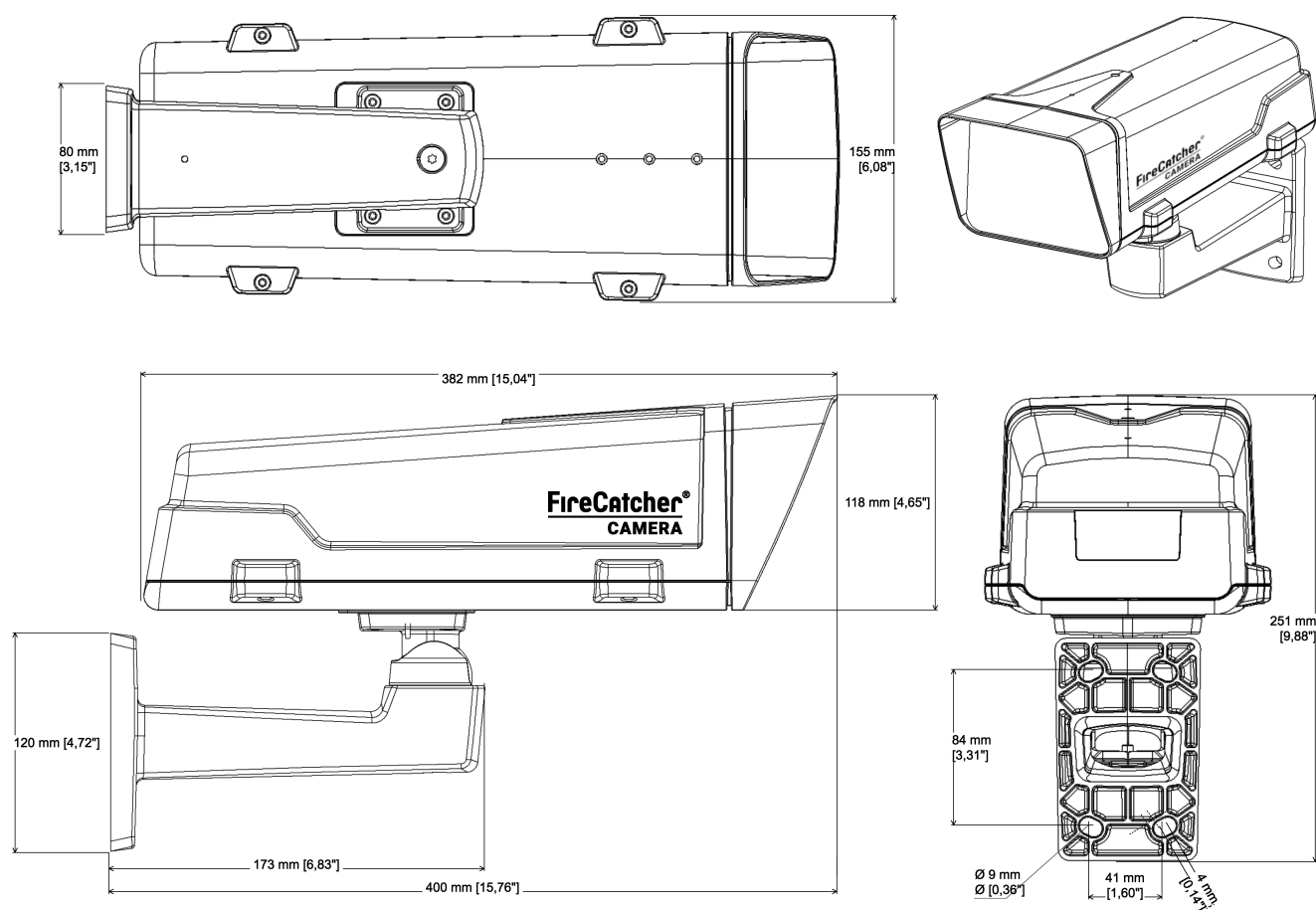
Wiring connections	
Power + alarm	Single shielded cable M20 5...9.5 mm (0.2 - 0.4 in) <ul style="list-style-type: none"> • 2 wires power • 2 wires fault • 2 wires primary alarm • Optional: 2 to 4 wires optional alarms (smoke, flame, supervisory)
Ethernet (optional)	Shielded (STP), category CAT5e or higher RJ45 connector

Ambient conditions and protection classification	
Operating temperature	-25...70 °C (-13...158 °F)
Storage temperature	-40...65 °C (-40...149 °F)
Operating humidity	10...100 % RH (condensing)
Storage humidity	5...95 % RH (non-condensing)
Minimum illumination	1 lux
Maximum illumination	120.000 lux
Maximum light ratio	brightest:darkest = 1000:1
Protection category	IP66
Impact protection	IK10

Detection intelligence				
Tampering and image quality control	Sends fault with the following events: <ul style="list-style-type: none"> Blocked/blurred image Lens dirty Camera out of focus Camera moved (field of view changed) 			
Minimum detection size <ul style="list-style-type: none"> Smoke Flame 	<ul style="list-style-type: none"> 2 % of field of view 0.01 % of field of view 			
Min. smoke width (at aspect ratio 3:1)	Distance to fire	Viewing angle		
		45°	60°	90°
	15 m	0.7 m	1.0 m	1.4 m
	25 m	1.2 m	1.6 m	2.4 m
Min. flame size (at aspect ratio 1:1)	35 m	1.7 m	2.3 m	3.3 m
	15 m	9 cm	12 cm	18 cm
	25 m	15 cm	21 cm	30 cm
	35 m	21 cm	29 cm	42 cm
Protection category				

Standards, directives and approvals	
EMC	IEC 62599-2, EN 50130-4/A1:2014, EN 61000-4-2, EN 61000-4-3, EN 61000-4-4, EN 61000-4-5, EN 61000-4-6
Fire Safety	CNPP – SPECIFICATION TECHNIQUE – ST LPMES – DEC.18.005B – 20/07/2022 INCENDIE –Type: Détecteur de fumée, Détecteur de flammes. BOSEC : BOSEC Mark Rules, NTN 177-C:2018, NTN 177-L:2019 - Video Smoke Detectors – Part L: Additional requirements to ISO/ TS 7240-29, ISO/TS 7240-29:2017 –Type A – Smoke Detector, Type B – Flame Detector
Environment	IEC/EN 60529 IP66, IEC 60068-2-1, IEC 60068-2-2, IEC 60068-2-6, IEC 60068-2-14, IEC 60068-2-27, IEC 60068-2-78, IEC/EN 62262
ONVIF	ONVIF® Profile G, ONVIF® Profile M, ONVIF® Profile S, ONVIF® Profile T

Dimensions



Issued by
Siemens Switzerland Ltd
Smart Infrastructure
Global Headquarters
Theilerstrasse 1a
CH-6300 Zug
+41 58 724 2424
www.siemens.com/buildingtechnologies

© Siemens 2022
Technical specifications and availability subject to change without notice.

Document ID A6V13407488_en--_b
Edition 2023-04-11